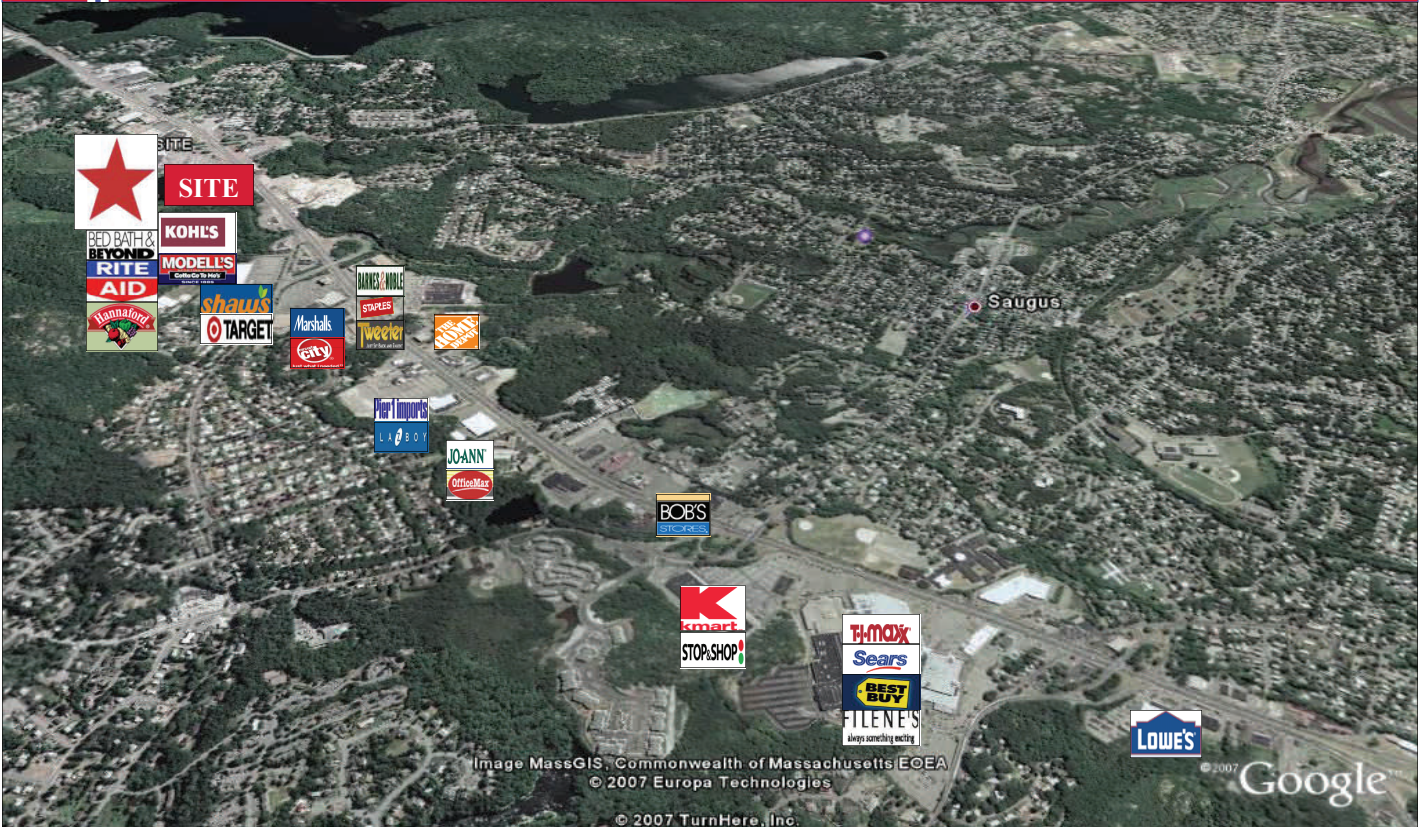


MILESTONE ASSOCIATES, INC.

# SAUGUS PLAZA SAUGUS, MASSACHUSETTS

2,500-7,355 SF Available



<u>Demographics</u>	<u>1 Mile</u>	<u>3Mile</u>	<u>5 Mile</u>
Population:	5,531	91,297	336,746
Households:	2,074	34,121	127,861
Median HH Income:	\$59,904	\$72,383	\$62,069
Daytime Employees:	5,595	36,065	127,614
Traffic Count :	120,800ADT		

For More Information Contact

Email: [ellen@milestoneassociates.com](mailto:ellen@milestoneassociates.com)  
[rick@milestoneassociates.com](mailto:rick@milestoneassociates.com)

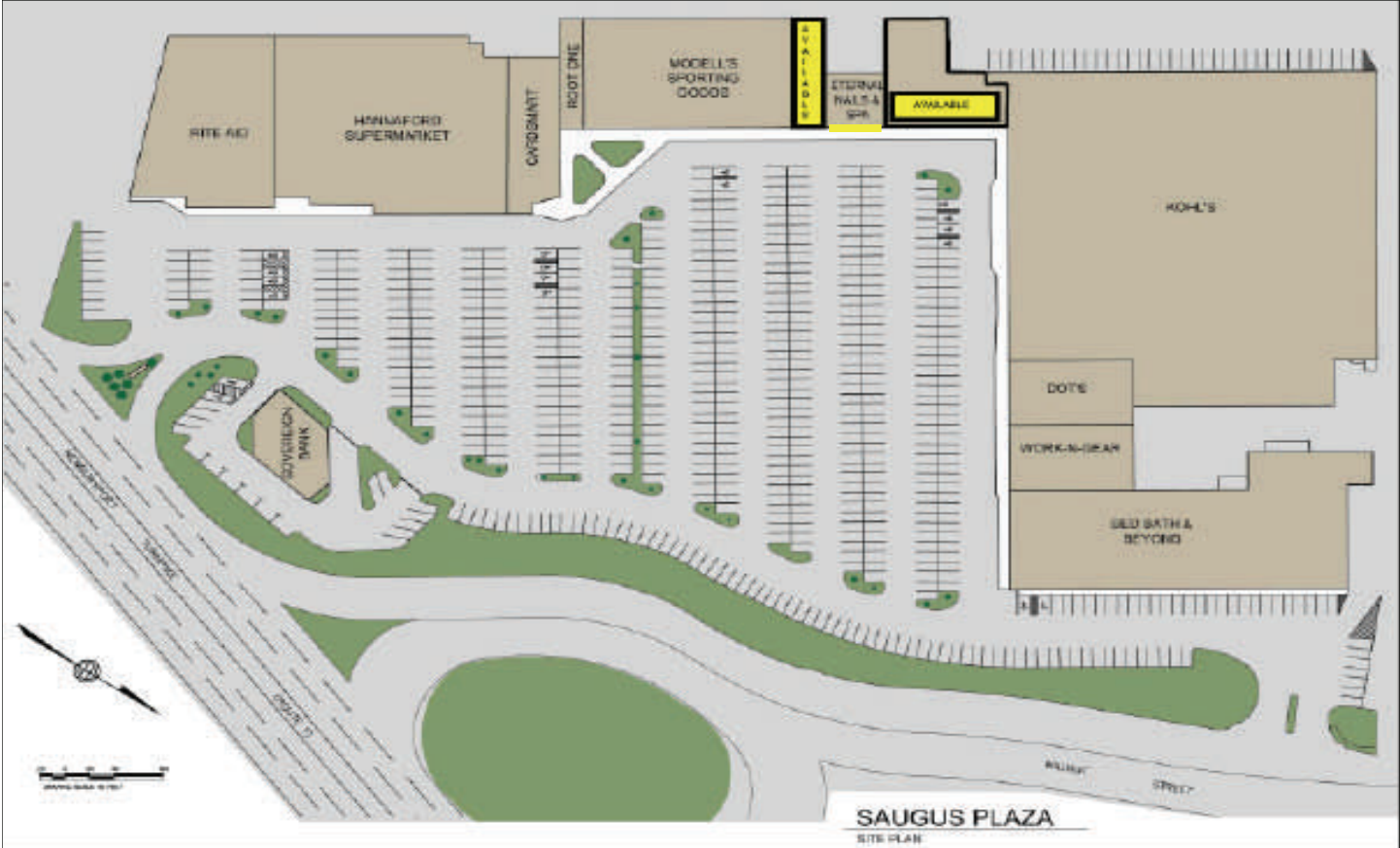
**Milestone Associates, Inc.**

192 Worcester Road ▪ Natick, MA 01760

Tel 508.650.1929 ▪ Fax 508.650.1944

# ROUTE 1, SAUGUS, MASSACHUSETTS

**2,500-7,355 SF Available**



<u>TENANTS</u>	<u>SQUARE FOOTAGE</u>
1) Rite-Aid	15,952 SF
2) Hannaford Supermarket	33,400 SF
3) CardSmart	2,850 SF
4) Root One Hair	2,000 SF
5) Modell's	16,120 SF
6) AVAILABLE	3,300 SF
7) Eternal Nails	2,500 SF

<u>TENANTS</u>	<u>SQUARE FOOTAGE</u>
8) AVAILABLE	7,355 SF
9) Kohl's Department Store	85,718 SF
10) Dots	6,140 SF
11) Work 'n Gear	6,030 SF
12) Bed Bath & Beyond	27,285 SF
13) Sovereign Bank	3,100 SF

For More Information Contact

Email: [ellen@milestoneassociates.com](mailto:ellen@milestoneassociates.com)  
[rick@milestoneassociates.com](mailto:rick@milestoneassociates.com)

## Milestone Associates, Inc

192 Worcester Road ▪ Natick, MA 01760

Tel 508.650.1929 ▪ Fax 508.650.1944

*The information herein is provided without representation or warranty and is submitted subject to errors, change of price, rental, or other conditions, prior sale or lease, or withdrawal without notice.*